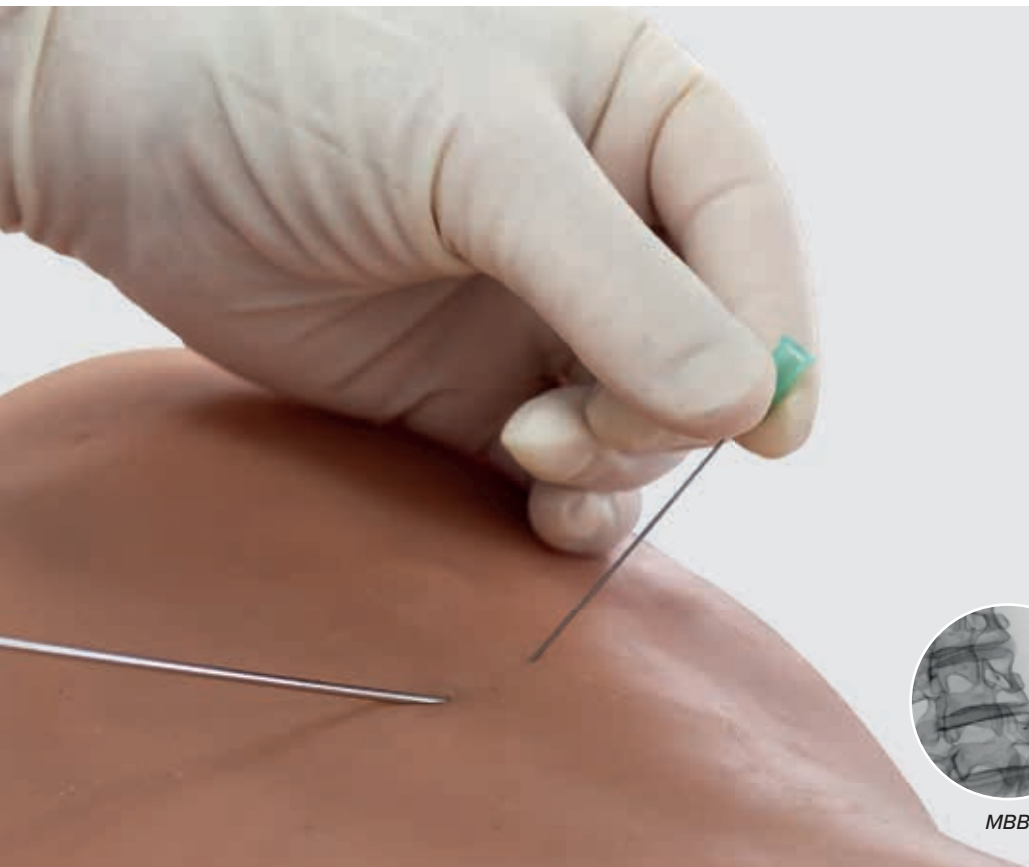


NEW

# Image Guided Spinal Injection Trainers

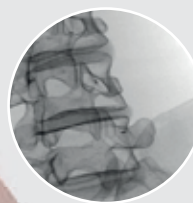
Improve outcomes of spine interventions with standardized image guided injection training.

The Image Guided Spinal Injection Trainers enable trainees and course participants to develop a three-dimensional understanding of the procedures for successful spine interventions. They will learn to correlate imaging with the spinal anatomy relevant to interventional pain procedures, to identify the target tissue and vulnerable structures using imaging and anatomic inspection, and to apply best practices to ensure patient safety during the interventional spine procedures.



Ideal solution to replace cadaver specimens in imaging courses & bio-skills labs:

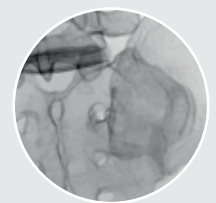
- Life-like radiopacity for realistic x-Ray images
- Realistic injection haptics with self-healing material
- Anatomically accurate bone structure
- Visually identifiable landmarks



MBB

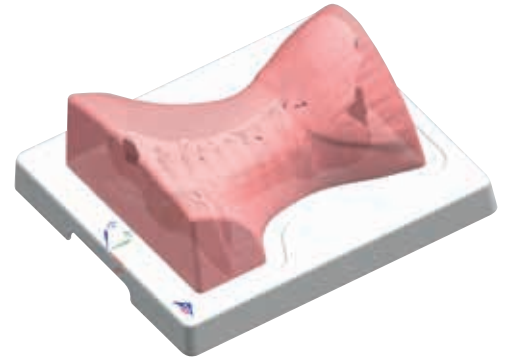
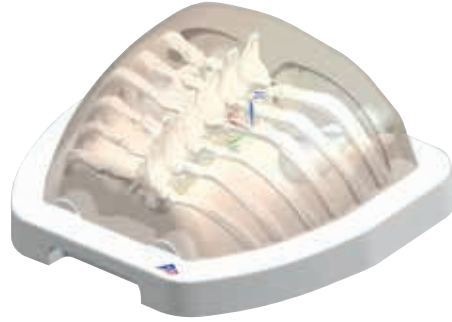
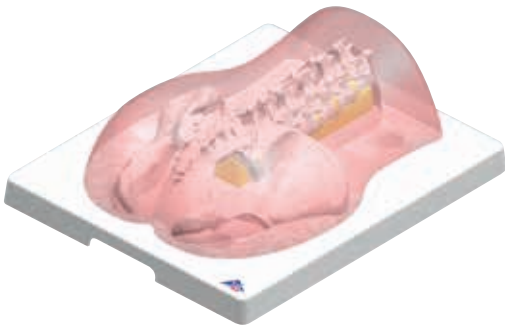


TFSI



S1

**Image Guided Spinal Injection Trainers:**



› Lumbar spine injection trainer (P65):  
1021898

› Thoracic spine injection trainer (P66):  
1021899

› Cervical spine injection trainer (P67):  
1021900

**Skeletal Anatomy for imaging:**

Sacrum, S1-S3 (with sacral hiatus canal)

Vertebrae T3-T8

Occipital bone (cranial to external occipital protuberance)

Ilium, bilateral without ischial bone and hip joint

Ribs 3-8

Vertebrae C1-Th2

Vertebrae T12-L5

Ribs 1 and 2

Coccyx

**Interventional spine procedures:**

Transforaminal Epidural Steroid Injections (TFESI)

Thoracic Interlaminar Injection

Landmark Guided Techniques

Intralaminar Epidural Injection

Thoracic Transforaminal Injection

Medial Branch Block

Facet Blocks

Thoracic Facet Joints Injection Intraarticular

Interlaminar Epidural Injection

Medial Branch Block (MBB/RF)

Thoracic Medial Branch Block & Radiofrequency Technique

Occipital Block

S1-block

Intercostal Blockade

Facet Radiofrequency Denervation

Sacroiliac Joint Injection (SIJ-injection)

An artificial pleura gives realistic feedback when injuring the pleura during the injection.

C1/C2 Intraarticular

Cervical Facet Intraarticular

› Scan code and watch video of the self-healing material



**The trainers are especially suitable for use in imaging courses thanks to these technical features:**

- Self-Sealing material can be used repeatedly for injection training
- Completely portable with a secure transport box
- Durable construction, easy to clean

**Each Image Guided Injection Trainer is delivered with:**

- 1 secure transport box
- 1 protective cover
- 1 bottle of 20 ml lubricant
- 1 container of talcum powder

› More information online at [3bscientific.com](http://3bscientific.com)